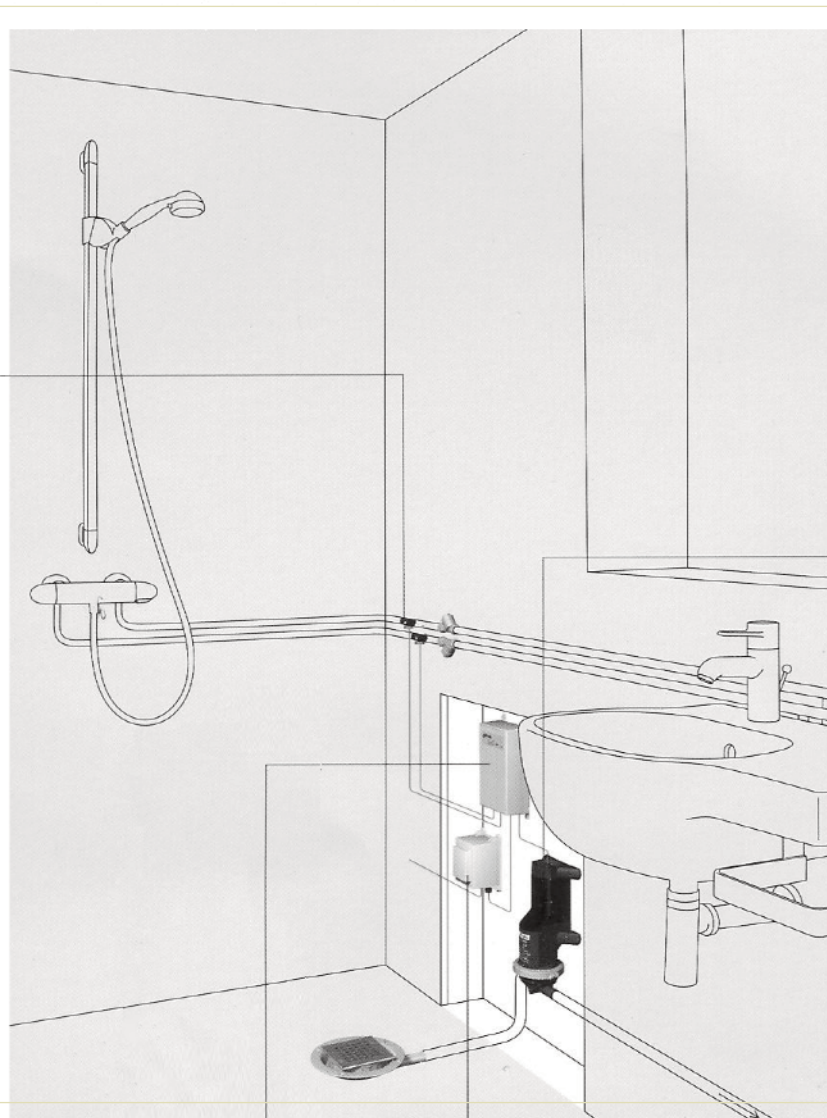


dry deck solution

The dry deck pump is for situations of zero gravity, such as basements, cellars etc.



flow sensor
measures the water flow through hot & cold pipes and transmits a signal to the control unit.



gulley
a range of pumped gulley for shower trays and wetroom floors is available.



dry deck pump
A quiet running waste water pump designed to pump up to 12 litres per minute. The pump has integral non-choke valves and requires no filter. The pump head, which incorporates the inlet and outlet valves, may be rotated 360 degrees to allow for specific pipework installations.

control unit
this unit initiates the start up of the pump, regulates the flow rate and controls the pump shut down.



transformer
the transformer unit converts the mains electricity supply (230v A.C.) to the low voltage DC supply required for the pump in domestic installations.

